

MM2

Name	MM-2
Reference	915050
EAN code	05028965837788
Waste Bag Capacity	70L
Storage	N/A
Castor Size	4 x 75mm
Press	N/A
Swing Buckets	2 x 5L
Mop Bucket	1 x 28L
Hooks	1 x Large T-Slot Hook
Clips	1 x T-Slot Mopstick Clip
Recycled Content	Minimum 59%
Dimensions (WxLxH)	480x940x1130 mm
Packed Dimensions (WxLxH)	500x530x840 mm



StructFoam
Construction



Made using Recycled Plastic

ReFlo Technology uses the highest quality recycled plastic, delivering the same Numatic reliability, durability and quality as always.

This product meets all the necessary qualifications to be certified for the following claim:
SCS RECYCLED CONTENT CERTIFIED



MADE WITH 59%
RECYCLED PLASTIC
POST-CONSUMER | PRE-CONSUMER

MULTI-MATIC MM2

Convenient, fully lidded 70L on-board waste facility; right there when you need it, and 2 x 5L buckets for ease of access to cleaning supplies ensuring you can clean as you go.

A compact trolley system with an 28L dolly mop bucket, providing a compact mopping system, facilitating on-the-go cleaning.

The MULTI-Matic Cleaning Trolley range benefits from unique heavy-duty Structofoam construction, using co-polymer grade material, making it tough, chemical resistant, easy to clean and built to last.

Made using our ReFlo recycled plastic reducing the use of virgin plastic wherever possible, whilst maintaining the same quality and durability in our products.

Recommended for Office Cleaning, Healthcare Cleaning, School and Education Cleaning and General Janitorial Cleaning.

MULTI-Matic Mop Kits & Accessories

WASTE BAG SECURING MOULDING



◇ Used on:
MM2 / 4 / 6 / 8
PN: 913978

WASTE BIN LID



◇ Used on:
MM2 / 4 / 6 / 8
PN: 913979

TOP STORAGE TRAY



◇ Used on:
MM1 / 3 / 5 / 7
PN: 913981

MID STORAGE TRAY



◇ Used on:
MM5 / 6
PN: 915060

VERTICAL MOP PRESS



◇ Flat Mop Press
◇ Used on: MM3 / 4
PN: 915326
◇ Kentucky/Twist Mop Press
◇ Used on: MM3 / 4
PN: 910439

WHEEL KIT



◇ Large Wheel Kit
PN: 915320

75MM CASTOR X1



◇ Castor x1
PN: 204118

FABRIC WASTE BAG



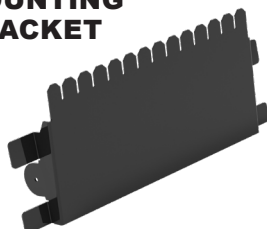
◇ Multi-pocket for
Convenient Storage
PN: 915319

BAG SPLITTER KIT



◇ 1 x Bag Splitter Kit
c/w 70L Waste Bags
◇ Used on: MM2 / 4 / 6 / 8
PN: 919813

MOUNTING BRACKET



◇ Dosed Mop Bucket
Bracket Frame
◇ Used on: MM7 / 8
PN: 915613

MOP DOSING BUCKET



◇ Dosed Mop Bucket,
Blue Handle
◇ Used on: MM7 / 8
PN: 915407

MOP DOSING LID



◇ Dosed Mop
Bucket Lid
◇ Used on: MM7 / 8
PN: 915406

28L TWINMOP BUCKET



◇ 28L TwinMop Bucket, Red
Handle PN: 905217
◇ 28L TwinMop Bucket, Blue
Handle PN: 905218
◇ 28L TwinMop Bucket, Green
Handle PN: 905219
◇ 28L TwinMop Bucket, Yellow
Handle PN: 905220
◇ Used on: MM1 / 2 / 7 / 8

17L FRONT MOP BUCKET



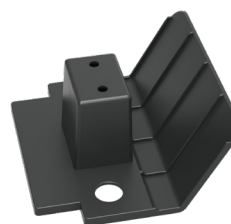
◇ 1 x 17L Bucket, Blue Handle
◇ Used on: MM3 / 4
PN: 915058

15L REAR MOP BUCKET



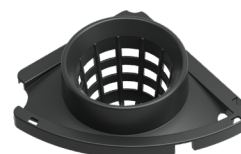
◇ 1 x 15L Bucket, Red Handle
◇ Used on: MM3 / 4
PN: 915057

MOP SUPPORT KIT



◇ 1 x Mop Support for On-board
Mop Storage
◇ Used on: EM Range
PN: 915321

MOP BASKET



◇ Dolly Mop Basket
PN: 906729